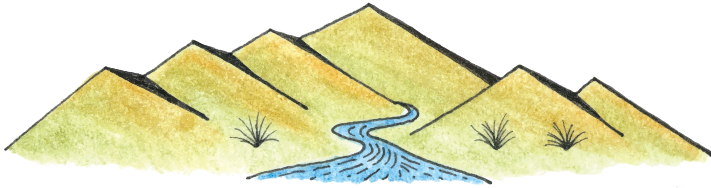


TRAMP THE NED WITH



SOUTH MARLBOROUGH LANDSCAPE RESTORATION TRUST

CONTROLLING WILDING PINES

The South Marlborough Landscape Restoration Trust's aim is to restore and protect the iconic scenic tussock grassland and alpine landscapes of South Marlborough by reducing the extent of wilding pines.

Our efforts cover an area of 870,000 hectares all the way from south of the Wairau River and the foothills of Blenheim to the Clarence and Molesworth Station in the south. Our goal is to cover 50,000 hectares per year.

With your help we can increase native biodiversity and have positive impacts on our ecosystems, cultural and historic values, recreation and reduce fire risk in South Marlborough.

With the help from the many landowners in The Ned/Te Hau area we can help preserve one of South Marlborough's largest area of indigenous forest, on the north flank of The Ned.

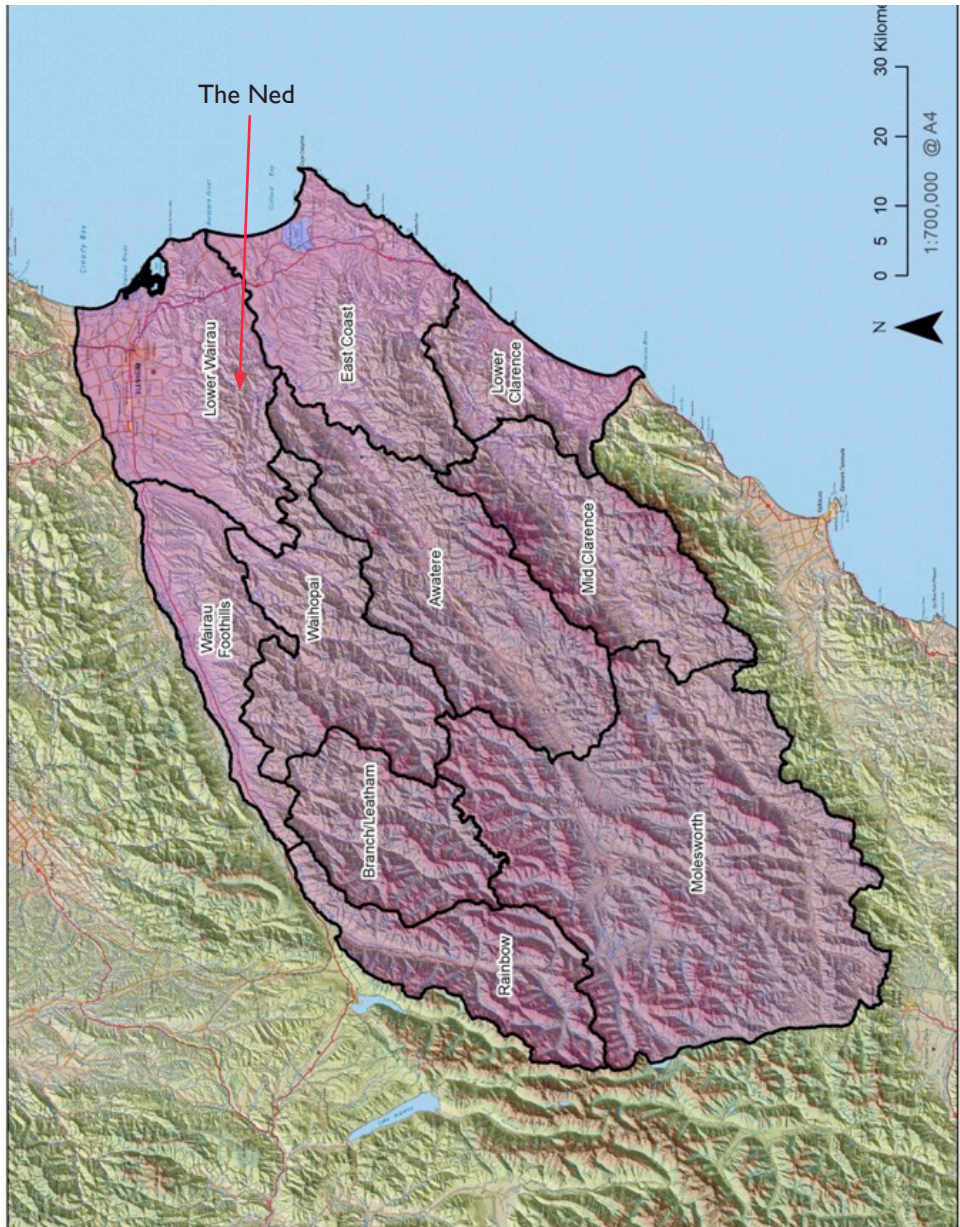
With special thanks to the Grigg family and Fairhall School

Enjoy your tramp!



WHERE DO WE WORK

WE COVER 870,000 HECTARES FROM
THE NED BEHIND BLENHEIM THROUGH
TO THE MOLESWORTH



WHY ARE WE CONTROLLING WILDING PINES ?

Restoring natural landscapes and cultural significance:

Places like Molesworth, the Awarere Valley, and the East Coast are iconic New Zealand landscapes.

*See back of book Te Hau 'The Ned'



Protecting South Marlborough rivers:

Did you know wilding pines affect water yields, as well as displacing vegetation associated with waterways, e.g. invading flood plains, and braided river islands.



Reducing the impact of wild fires

Wilding pines increase the risk of wild fires as they provide a large fire mass compared to grassland environments.



Protecting biodiversity and native ecosystems

Wilding conifer infestations are invading these areas, changing the micro-climate, and, along with possums and other pests, are replacing the native species.

It's about restoring ecosystems so that all wildlife can function, and about protecting that which is also rare. wilding



Above right: *The Ned before South Marlborough Landscape Restoration Trust work.*

Left: *The Ned Gully after treated wilding pines.*

WHAT YOU CAN FIND AT THE NED?

Did you know:

South Marlborough is one of the highest sites of endemism in the country (amongst the top 5) - which means there are literally hundreds of plants and some animals that are found nowhere else in the country.

What Biodiversity can you find on your Tramp up The Ned:

Mountain Totara



Mahoe-wao in
kanuka forest



Carmichaelia carmichaeliae
(pink broom)



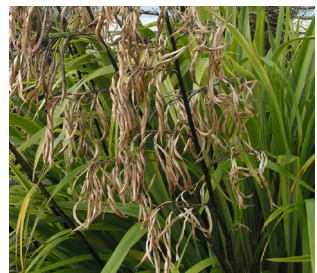
Tauhinu



Olearia cymbifolia



Wharariki/Flax



Spotted Grass Skink



Bellbird/Korimako



Marlborough Mini
Gecko

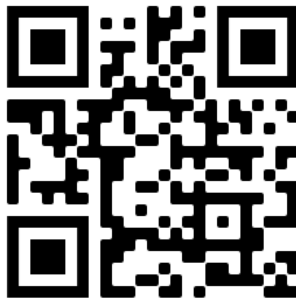


FIND THE FELLED PINE - COUNT THE RINGS

THE SOUTH MARLBOROUGH LANDSCAPE
RESTORATION TRUST FELLED A VERY LARGE WILDING
RADIATA PINE 2 MONTHS AGO.

CAN YOU GUESS ITS AGE??

SCAN THE QR CODE TO WATCH THE ACTION.



Did you know there are more than 10 types of wilding pines trees in NZ - the major offenders in South Marlborough are Radiata pine, Contorta pine and Douglas Fir.

RADIATA



CONTORTA



DOUGLAS FIR



HOW CAN YOU HELP??

WATCH WHERE YOU ARE WALKING!

Keep an eye out for the little seedling pines: see below:



The best way to start helping is pull or dig these crafty pines up while they are small - its the most effective way to prevent the spread. The seedlings can grow just about anywhere, under larger native trees, between rocks and at extreme altitudes!

VOLUNTEER

Do you fancy getting your hands dirty or seeing some amazing high country while helping preserve the landscape with friends or co-workers! Also we are in need of help with social media and administration.

Just get in touch info@marlboroughrestoration.org.nz or get in touch through our website.
www.marlboroughrestoration.org.nz

DONATE

We have a target of covering 50,000 hectares a year this takes a lot of resources if you don't think you fancy tramping around the hills you could donate to our givealittle page. Just \$10 can help fund 1 hectare!

Scan QR code or visit:
<https://givealittle.co.nz/org/south-marlborough-landscape-restoration-trust>



TE HAU ‘THE NED’

*This 909-metre peak (The Ned) is the face, or more precisely the nose, of this celebrated ancestor looking out across his extensive territory, literally ‘the long gaze of Te Hau’.

The Taylor Valley, the source of the Taylor River, runs north east from The Ned, and which forms the backdrop to Blenheim. From the summit it is possible to view much of the lower Awatere and Wairau Plain. Kapara Te Hau (The sunken gardens of Te Hau), or more commonly known as Lake Grassmere, can clearly be seen from the summit.

The Ned/Te Hau has been farmed by the Grigg family since 1913, and is now the largest area of indigenous forest, on the north flank of The Ned.

The trust has applied for funding to continue the work of the Tempello Biodiversity Project, which involves weed and pest control and replanting of threatened species.



MANY THANKS TO THE MAJOR SPONSOR FOR
TRAMP THE NED



SEE WHAT THE TRUST DOES CONTROLLING WILDING PINES!



The South Marlborough Landscape Restoration Trust would like to thank all partners and volunteers who have helped make the restoration work happen so far and their on going support!

Below Left to Right: Trustee Stuart Dudley, Trustee Debs Martin and Coordinator Ket Bradshaw with our sponsored ute by Blenheim Toyota

